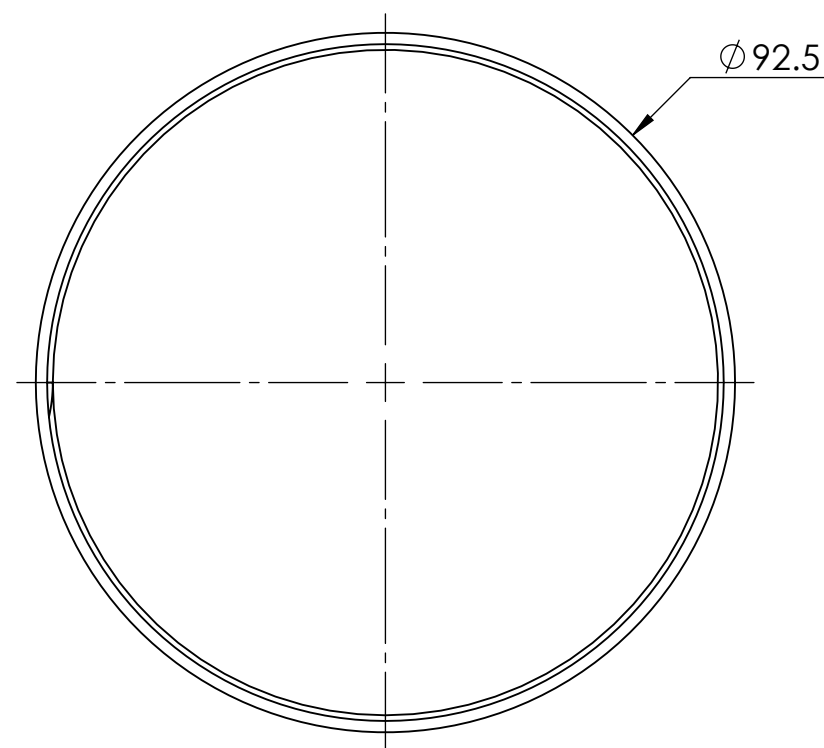
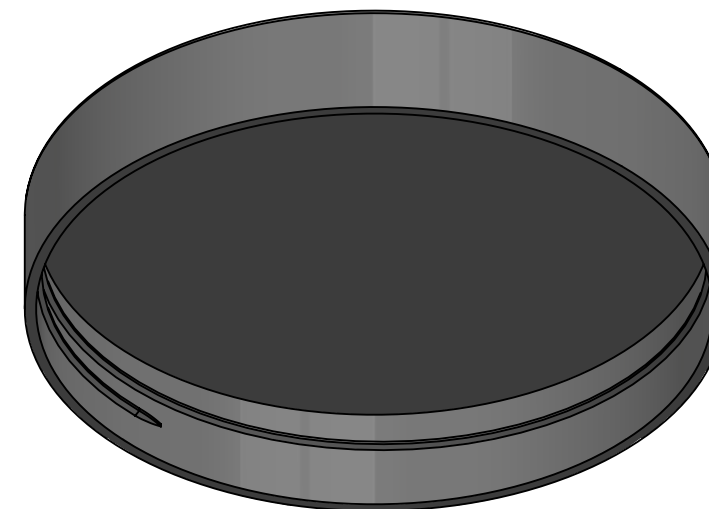
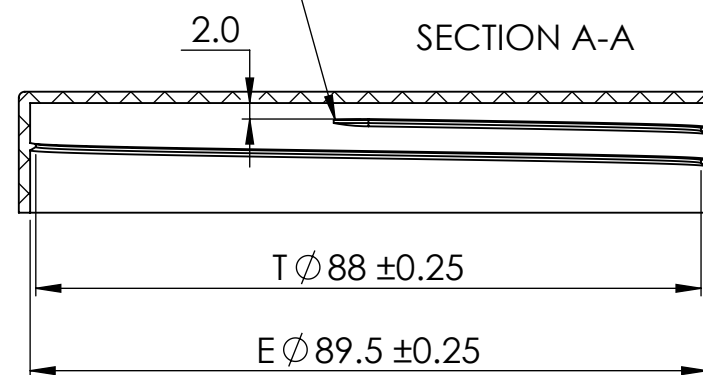

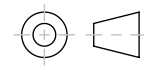


Thread = 6 T.P.I x 1.5 Turns



CHANGE DETAILS				DATE	BY	ISSUE
FINISH:		MATERIAL:	ALL DIMENSIONS IN mm			
		P.P	DRAWN <i>George.K</i> www.cadcamservices.com.au		<div>ELLAPACK Pty Ltd</div> <div>Blow Moulders of Plastic Containers and Technical Parts</div> <div></div>	
COPYRIGHT THIS DRAWING IS CONFIDENTIAL AND MUST NOT BE COPIED OR DISCLOSED IN PART OR FULL WITHOUT CONSENT		CHECKED	DATE 01/12/24			
PROJECTION  3rd ANGLE		TOLERANCES <div>LINIER X ± 0.25 X.X ± 0.1 X.XX ± 0.05</div> <div>ANGULAR ± 1 DEG</div>		TITLE: 89MM - CAP		
WEIGHT: 12.0 grams approx			SCALE:1:1	A3	DWG NO.	